

# Common Dragonflies and Damselflies of the Chicago Region

Volunteer Stewardship Network – Chicago Wilderness

Produced by: John & Jane Balaban, Jennie Kluse & Robin Foster, with assistance of Laurel Ross and support from the Gordon & Betty Moore Foundation.  
 Photos © John & Jane Balaban; [balx2@comcast.net] North Branch Restoration Project, with additions by © Thomas Murray (27, 32) and © Vincent Hickey (30).  
 © Environmental & Conservation Programs, The Field Museum, Chicago, IL 60605 USA. [http://www.fmmh.org/chicagoguides/]. Chicago Wilderness Guide #1 version 2 (4/2006)

## LIBELLULIDAE - Skimmers

Large, showy, frequently seen resting on or flying low over vegetation. Often hunt from a perch like Kingbirds. Also includes our smallest dragonflies (Nannothemis and Perithemis) and the ubiquitous Meadowhawks.



**1 Sympetrum rubicundulum ♀/♂**  
 Ruby Meadowhawk: male and female mating in "wheel" position. 34-38mm

## RESOURCES:

- Dragonflies of Indiana** by J. R. Curry. Indiana Academy of Science. 2001. ISBN: 1-883362-11-3
- Beginner's Guide to Dragonflies** by Nikula and Sones with D. and L. Stokes. Little, Brown, and Company. 2002. ISBN: 0-316-81679-5
- Damselflies of the Northeast** by E. Lam. Biodiversity Books. 2004. ISBN: 0-9754015-0-5
- Damselflies of the North Woods** by B. DuBois. Kollath-Stensaas Pub. 2005. ISBN: 0-9673793-7-7

<http://bugguide.ent.iastate.edu/node/view/191/bgimage>  
<http://cirrusimage.com/dragonflies.htm>  
<http://wisconsinbutterflies.org/damselflies/>



**2 Sympetrum obtrusum ♂**  
 White-faced Meadowhawk: white face. 32-36mm  
 Above species are medium-sized and common. Adult males are usually red; females and immature males are yellow;



**3 Sympetrum vicinum ♀**  
 Yellow-legged Meadowhawk: yellow legs. 30-36mm



**4 Sympetrum semicinctum ♂**  
 Band-winged Meadowhawk: half amber wings. 26-38mm  
 both sexes sometimes with black abdominal markings.



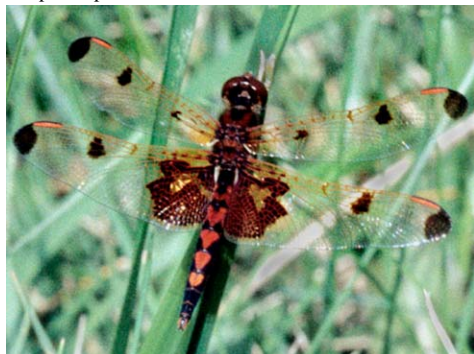
**5 Nannothemis bella ♂**  
 Elfin Skimmer: our tiniest dragonfly; female has wasp-like pattern on abdomen. 19-21mm



**6 Perithemis tenera ♂**  
 Eastern Amberwing: male has amber wings. 19-25mm



**7 Perithemis tenera ♀**  
 Eastern Amberwing: female has spotted wings. 19-25mm



**8 Celithemis elisa ♂**  
 Calico Pennant: female has same pattern but golden colors. 28-34mm



**9 Celithemis eponina ♂**  
 Halloween Pennant: sits on tips of vegetation even on the windiest days. 34-39mm



**10 Libellula quadrimaculata ♂**  
 Four-spotted Skimmer: stout body; amber and black wing markings. 42-49mm