

Carex of Northeastern Illinois and Northwestern Indiana, USA

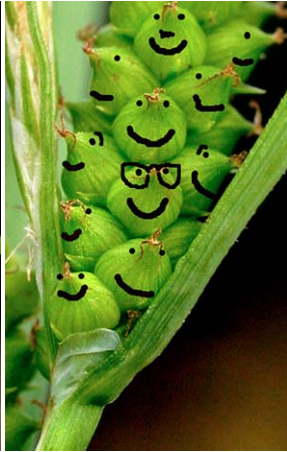
4 Sedges (Carex spp.) of the Chicago Region

WEB VERSION

Volunteer Stewardship Network – Chicago Wilderness

Photos by: © Paul Rothrock (Taylor University, IN), © John & Jane Balaban (balx2@comcast.net; North Branch Restoration Project), © Andrew Hipp (Morton Arboretum) and © Anton Reznicek (University of Michigan). Produced by: John & Jane Balaban, Paul Rothrock, Andrew Hipp, Jennie Kluse & Robin Foster, with assistance of Laurel Ross and Anton Reznicek. Support from: the Dorothy and Gaylord Donnelley Foundation and the John D. and Catherine T. MacArthur Foundation.

© Environmental & Conservation Programs, The Field Museum, Chicago, IL 60605 USA. [http://www.fnmh.org/temperateguides/]. Chicago Wilderness Guide #4 version 1 (01/2007)



41 *C. granularis* **42 *C. granularis***
PALE SEDGE: basal rosettes of blue-gray, glaucous leaves are distinctive even without the flowering stems; perigynia pale green with very small flecks of red pigment, packed on the spikes like corn on the cob. Calcareous wetlands.

43 *C. grisea*
WOOD GRAY SEDGE: similar to *C. blanda*, but plants stouter, taller, not as soft at the bases, and perigynia football-shaped. Mesic to wet woods.

44 *C. stricta* **45 *C. stricta***
COMMON TUSsock SEDGE: plants form large hummocks in saturated soils: hear the crunch and feel them wobbling under your feet when walking across a sedge meadow in early spring, when just the bluish shoots are visible;



46 *C. stricta* **47 *C. stricta***
COMMON TUSsock SEDGE: shoots with red, ladder-fibrillose bases; perigynia flattened, lenticular. Open wetlands.

48 *C. woodii* **49 *C. woodii*** **50 *C. woodii***
WOOD'S STIFF SEDGE: rhizomatous; basal sheaths bladeless, deep red, not fibrous; leaves narrow, erect; sometimes confused with *C. pennsylvanica*, but taller with glabrous perigynia borne in looser, elongate spikes. Wet woods.

Group 6. FEMALE-TIPPED SEDGES:
Some spikes wholly female; terminal spike bisexual with female flowers above male; often pedunculate spikes; perigynia < 1cm long.



51 *C. buxbaumii* **52 *C. buxbaumii***
DARK-SCALED SEDGE: terminal spike bisexual, resembling an ice cream cone topped w/ perigynia; pistillate scales dark-margined, tapering to a long-pointed apex; perigynia whitish to gray-green, granular, beakless to short-beaked. Calcareous wetlands.

53 *C. gracillima* **54 *C. gracillima***
PURPLE-SHEATHED GRACEFUL SEDGE: bases red to purple; terminal spike tipped with perigynia, lateral spikes drooping; perigynia beakless. Mesic to wet woods.